



OUR PUMPS ARE YOUR SOLUTION

HVAC | Plumbing | Refrigeration



Table of Contents

Residential Grade Condensate Pumps..... 3

- Mini-Split Condensate Pumps
 - Remote Sensor (HAR-X)
 - Universal Corner (HAD-X)
- Reservoir Condensate Pumps
 - HAT-X Series
- Light Commercial Grade Condensate Pumps
 - PABX Series

Commercial Grade Condensate Pumps..... 8

- Plenum Rated Condensate Pumps
 - A3/A5 Series
 - A2X-1965 Series
 - KL-1DG Series
- Commercial Grade Condensate Pumps
 - A2 Series
 - A2-SA Series
 - L4 Series
 - SC-1A Series
 - AL2 Series

Plumbing Pumps..... 17

- LTP/LTS Series
- LTA Series

Retail Refrigeration Pumps..... 20

- HDP-AI-X

Ice Machine Pumps..... 22

Hartell

For more than 50 years, Hartell has been supplying a full line of innovative, high quality condensate, waste water, ice machine and general-purpose pumps and accessories to the HVAC, plumbing, refrigeration, and ice industries. Hartell is committed to performance and safety, designing pumps reliable enough to stand the test of time and safe enough to be trusted in the most important applications. With operations in USA and Sunderland, UK Hartell is active in over 50 countries spanning Europe and the Americas.

For more information, visit hartell.com.

Residential Grade Condensate Pumps

Hartell's pumps help make life enjoyable



Application of Residential Condensate Pumps

Equipment types, such as air conditioners, refrigerators, humidifiers and de-humidifiers, produce condensate in different ways, requiring specialized equipment that can handle a range in temperature and volume.

Hartell's HAD & HAR models are designed for use with mini-split systems and come with a maximum cooling capacity that helps prevent misapplication and potential failures. HAD & HAR are also suitable for air conditioning equipment up to 15kW/45,000 BTU's.



Our PABX, HAD, HAR & HAT range of AC&R condensate pumps offer pumping heads up to 26 ft. (8 m) and flow rates of up to 155 gal/hr (586 l/hr), ideally suited for use with low temperature condensate equipment like air conditioning, commercial refrigeration and other condensate furnace applications.



Pump Selection and Sizing

When choosing the right condensate pump, it is important to account for the temperature of the condensate, the amount of condensate being produced within a given time, and the maximum pumping head. Ensure the pump can discharge the maximum amount of condensate being produced at the maximum discharge head without the pump running continually.

All of Hartell's residential models come with standard built-in secondary safety switches to prevent failure and potential water damage.

Mini-Split Condensate Pumps

Remote Sensor (HAR-X)

A range of condensate pumps for installation where the sensor can be mounted internally to the indoor unit and the pump is mounted remotely. Suitable for all types of AC equipment up to 15KW (45,000 BTU) and pumping heads up to 26 ft. The pumps come standard with high level alarm, volt-free contacts and motor overload protection.



Key Features:

- ▶ Operation from 0°—122°F (-17°—50°C)
- ▶ Input voltage: 100—230V, AC 50Hz—60Hz
- ▶ Max flow rate: 3.17 gal/hr (12 l/hr), 5.28 gal/hr (20 l/hr)
- ▶ Inlet: 0.4 in. (16 mm)
- ▶ Outlet: 0.27 in. (7 mm)
- ▶ Ultra-quiet and no vibration (noise level 19dBA, 21dBA)
- ▶ Highly reliable
- ▶ High flow rate
- ▶ Compact construction, easy assembly
- ▶ Modern design
- ▶ 1 year warranty

Lift/Feet	2'	4'	6'	8'	10'	12'	14'	16'	18'	20'	22'	24'	26'	36'	48'	
Lift/Meters	0.60	1.21	1.82	2.43	3.04	3.65	4.26	4.87	5.48	6.09	6.70	7.31	7.92	10.97	14.63	
Horizontal Run 3'/1m	○ HAR-8 2.64 gal/hr (10 l/hr) HAR-15 4.75 gal/hr (18 l/hr)		○ HAR-8 1.84 gal/hr (7 l/hr) HAR-15 2.64 gal/hr (10 l/hr)		○ HAR-8 1.58 gal/hr (6 l/hr) HAR-15 2.37 gal/hr (9 l/hr)		○ HAR-8 1.32 gal/hr (5 l/hr) HAR-15 2.64 gal/hr (10 l/hr)		○ HAR-8 1.32 gal/hr (5 l/hr) HAR-15 2.64 gal/hr (10 l/hr)		○ HAR-8 N/A HAR-15 2.11 gal/hr (8 l/hr)		○ HAR-8 N/A HAR-15 2.11 gal/hr (8 l/hr)		○ HAR-8 N/A HAR-15 1.32 gal/hr (5 l/hr)	
	○ HAR-8 2.37 gal/hr (9 l/hr) HAR-15 3.96 gal/hr (15 l/hr)		○ HAR-8 1.58 gal/hr (6 l/hr) HAR-15 3.43 gal/hr (13 l/hr)		○ HAR-8 1.05 gal/hr (4 l/hr) HAR-15 2.9 gal/hr (11 l/hr)		○ HAR-8 1.32 gal/hr (5 l/hr) HAR-15 2.64 gal/hr (10 l/hr)		○ HAR-8 1.32 gal/hr (5 l/hr) HAR-15 2.64 gal/hr (10 l/hr)		○ HAR-8 N/A HAR-15 2.11 gal/hr (8 l/hr)		○ HAR-8 N/A HAR-15 2.11 gal/hr (8 l/hr)		○ HAR-8 N/A HAR-15 1.32 gal/hr (5 l/hr)	
	○ HAR-8 2.11 gal/hr (8 l/hr) HAR-15 3.69 gal/hr (14 l/hr)		○ HAR-8 3.2 gal/hr (12 l/hr) HAR-15 2.11 gal/hr (8 l/hr)		○ HAR-8 1.32 gal/hr (5 l/hr) HAR-15 2.64 gal/hr (10 l/hr)		○ HAR-8 1.32 gal/hr (5 l/hr) HAR-15 2.64 gal/hr (10 l/hr)		○ HAR-8 N/A HAR-15 2.11 gal/hr (8 l/hr)		○ HAR-8 N/A HAR-15 2.11 gal/hr (8 l/hr)		○ HAR-8 N/A HAR-15 1.32 gal/hr (5 l/hr)		○ HAR-8 N/A HAR-15 1.32 gal/hr (5 l/hr)	
Horizontal Run 15'/5m	○ HAR-8 2.37 gal/hr (9 l/hr) HAR-15 3.96 gal/hr (15 l/hr)		○ HAR-8 1.58 gal/hr (6 l/hr) HAR-15 3.43 gal/hr (13 l/hr)		○ HAR-8 1.05 gal/hr (4 l/hr) HAR-15 2.9 gal/hr (11 l/hr)		○ HAR-8 1.32 gal/hr (5 l/hr) HAR-15 2.64 gal/hr (10 l/hr)		○ HAR-8 1.32 gal/hr (5 l/hr) HAR-15 2.64 gal/hr (10 l/hr)		○ HAR-8 N/A HAR-15 2.11 gal/hr (8 l/hr)		○ HAR-8 N/A HAR-15 2.11 gal/hr (8 l/hr)		○ HAR-8 N/A HAR-15 1.32 gal/hr (5 l/hr)	
	○ HAR-8 2.11 gal/hr (8 l/hr) HAR-15 3.69 gal/hr (14 l/hr)		○ HAR-8 3.2 gal/hr (12 l/hr) HAR-15 2.11 gal/hr (8 l/hr)		○ HAR-8 1.32 gal/hr (5 l/hr) HAR-15 2.64 gal/hr (10 l/hr)		○ HAR-8 1.32 gal/hr (5 l/hr) HAR-15 2.64 gal/hr (10 l/hr)		○ HAR-8 N/A HAR-15 2.11 gal/hr (8 l/hr)		○ HAR-8 N/A HAR-15 2.11 gal/hr (8 l/hr)		○ HAR-8 N/A HAR-15 1.32 gal/hr (5 l/hr)		○ HAR-8 N/A HAR-15 1.32 gal/hr (5 l/hr)	
	○ HAR-8 2.11 gal/hr (8 l/hr) HAR-15 3.69 gal/hr (14 l/hr)		○ HAR-8 3.2 gal/hr (12 l/hr) HAR-15 2.11 gal/hr (8 l/hr)		○ HAR-8 1.32 gal/hr (5 l/hr) HAR-15 2.64 gal/hr (10 l/hr)		○ HAR-8 1.32 gal/hr (5 l/hr) HAR-15 2.64 gal/hr (10 l/hr)		○ HAR-8 N/A HAR-15 2.11 gal/hr (8 l/hr)		○ HAR-8 N/A HAR-15 2.11 gal/hr (8 l/hr)		○ HAR-8 N/A HAR-15 1.32 gal/hr (5 l/hr)		○ HAR-8 N/A HAR-15 1.32 gal/hr (5 l/hr)	
Horizontal Run 30'/10m	○ HAR-8 2.11 gal/hr (8 l/hr) HAR-15 3.69 gal/hr (14 l/hr)		○ HAR-8 3.2 gal/hr (12 l/hr) HAR-15 2.11 gal/hr (8 l/hr)		○ HAR-8 1.32 gal/hr (5 l/hr) HAR-15 2.64 gal/hr (10 l/hr)		○ HAR-8 1.32 gal/hr (5 l/hr) HAR-15 2.64 gal/hr (10 l/hr)		○ HAR-8 N/A HAR-15 2.11 gal/hr (8 l/hr)		○ HAR-8 N/A HAR-15 2.11 gal/hr (8 l/hr)		○ HAR-8 N/A HAR-15 1.32 gal/hr (5 l/hr)		○ HAR-8 N/A HAR-15 1.32 gal/hr (5 l/hr)	
	○ HAR-8 2.11 gal/hr (8 l/hr) HAR-15 3.69 gal/hr (14 l/hr)		○ HAR-8 3.2 gal/hr (12 l/hr) HAR-15 2.11 gal/hr (8 l/hr)		○ HAR-8 1.32 gal/hr (5 l/hr) HAR-15 2.64 gal/hr (10 l/hr)		○ HAR-8 1.32 gal/hr (5 l/hr) HAR-15 2.64 gal/hr (10 l/hr)		○ HAR-8 N/A HAR-15 2.11 gal/hr (8 l/hr)		○ HAR-8 N/A HAR-15 2.11 gal/hr (8 l/hr)		○ HAR-8 N/A HAR-15 1.32 gal/hr (5 l/hr)		○ HAR-8 N/A HAR-15 1.32 gal/hr (5 l/hr)	
	○ HAR-8 2.11 gal/hr (8 l/hr) HAR-15 3.69 gal/hr (14 l/hr)		○ HAR-8 3.2 gal/hr (12 l/hr) HAR-15 2.11 gal/hr (8 l/hr)		○ HAR-8 1.32 gal/hr (5 l/hr) HAR-15 2.64 gal/hr (10 l/hr)		○ HAR-8 1.32 gal/hr (5 l/hr) HAR-15 2.64 gal/hr (10 l/hr)		○ HAR-8 N/A HAR-15 2.11 gal/hr (8 l/hr)		○ HAR-8 N/A HAR-15 2.11 gal/hr (8 l/hr)		○ HAR-8 N/A HAR-15 1.32 gal/hr (5 l/hr)		○ HAR-8 N/A HAR-15 1.32 gal/hr (5 l/hr)	
Horizontal Run 45'/15m	○ HAR-8 2.11 gal/hr (8 l/hr) HAR-15 3.69 gal/hr (14 l/hr)		○ HAR-8 3.2 gal/hr (12 l/hr) HAR-15 2.11 gal/hr (8 l/hr)		○ HAR-8 1.32 gal/hr (5 l/hr) HAR-15 2.64 gal/hr (10 l/hr)		○ HAR-8 1.32 gal/hr (5 l/hr) HAR-15 2.64 gal/hr (10 l/hr)		○ HAR-8 N/A HAR-15 2.11 gal/hr (8 l/hr)		○ HAR-8 N/A HAR-15 2.11 gal/hr (8 l/hr)		○ HAR-8 N/A HAR-15 1.32 gal/hr (5 l/hr)		○ HAR-8 N/A HAR-15 1.32 gal/hr (5 l/hr)	
	○ HAR-8 2.11 gal/hr (8 l/hr) HAR-15 3.69 gal/hr (14 l/hr)		○ HAR-8 3.2 gal/hr (12 l/hr) HAR-15 2.11 gal/hr (8 l/hr)		○ HAR-8 1.32 gal/hr (5 l/hr) HAR-15 2.64 gal/hr (10 l/hr)		○ HAR-8 1.32 gal/hr (5 l/hr) HAR-15 2.64 gal/hr (10 l/hr)		○ HAR-8 N/A HAR-15 2.11 gal/hr (8 l/hr)		○ HAR-8 N/A HAR-15 2.11 gal/hr (8 l/hr)		○ HAR-8 N/A HAR-15 1.32 gal/hr (5 l/hr)		○ HAR-8 N/A HAR-15 1.32 gal/hr (5 l/hr)	
	○ HAR-8 2.11 gal/hr (8 l/hr) HAR-15 3.69 gal/hr (14 l/hr)		○ HAR-8 3.2 gal/hr (12 l/hr) HAR-15 2.11 gal/hr (8 l/hr)		○ HAR-8 1.32 gal/hr (5 l/hr) HAR-15 2.64 gal/hr (10 l/hr)		○ HAR-8 1.32 gal/hr (5 l/hr) HAR-15 2.64 gal/hr (10 l/hr)		○ HAR-8 N/A HAR-15 2.11 gal/hr (8 l/hr)		○ HAR-8 N/A HAR-15 2.11 gal/hr (8 l/hr)		○ HAR-8 N/A HAR-15 1.32 gal/hr (5 l/hr)		○ HAR-8 N/A HAR-15 1.32 gal/hr (5 l/hr)	

Universal Corner (HAD-X)

A range of condensate pumps for installation inside plastic ducting alongside the insulated cooling pipes. Suitable for all type of AC equipment up to 15KW (45,000 BTU) and pumping heads up to 26 ft. The pumps come standard with high level alarm volt-free contacts and motor overload protection.



Key Features:

- ▶ Operation from 0° – 122°F (-17° – 50°C)
- ▶ Input voltage: 100–230V, AC 50Hz–60Hz
- ▶ Max flow rate: 3.17 gal/hr (12 l/hr), 5.28 gal/hr (20 l/hr)
- ▶ Inlet: 0.4 in. (16 mm)
- ▶ Outlet: 0.27 in. (7 mm)
- ▶ Ultra-quiet and no vibration (noise level 19dBA, 21dBA)
- ▶ Highly reliable
- ▶ High flow rate
- ▶ Compact construction, easy assembly
- ▶ Modern design

Lift/Feet	2'	4'	6'	8'	10'	12'	14'	16'	18'	20'	22'	24'	26'	36'	48'	
Lift/Meters	0.60	1.21	1.82	2.43	3.04	3.65	4.26	4.87	5.48	6.09	6.70	7.31	7.92	10.97	14.63	
Horizontal Run 3'/1m			HAD-8 2.64 gal/hr (10 l/hr)		HAD-15 4.75 gal/hr (18 l/hr)		HAD-8 1.84 gal/hr (7 l/hr)		HAD-15 2.64 gal/hr (10 l/hr)		HAD-8 1.58 gal/hr (6 l/hr)		HAD-15 2.37 gal/hr (9 l/hr)			
			HAD-8 2.37 gal/hr (9 l/hr)		HAD-15 3.96 gal/hr (15 l/hr)		HAD-8 1.58 gal/hr (6 l/hr)		HAD-15 3.43 gal/hr (13 l/hr)		HAD-8 1.05 gal/hr (4 l/hr)		HAD-15 2.9 gal/hr (11 l/hr)			
			HAD-8 1.32 gal/hr (5 l/hr)		HAD-15 2.64 gal/hr (10 l/hr)		HAD-8 1.32 gal/hr (5 l/hr)		HAD-15 2.64 gal/hr (10 l/hr)		HAD-8 N/A		HAD-15 2.11 gal/hr (8 l/hr)			
Horizontal Run 15'/5m			HAD-8 2.11 gal/hr (8 l/hr)		HAD-15 3.69 gal/hr (14 l/hr)		HAD-8 3.2 gal/hr (12 l/hr)		HAD-15 2.11 gal/hr (8 l/hr)		HAD-8 N/A		HAD-15 1.32 gal/hr (5 l/hr)			
			HAD-8 1.32 gal/hr (5 l/hr)		HAD-15 2.64 gal/hr (10 l/hr)		HAD-8 1.32 gal/hr (5 l/hr)		HAD-15 2.64 gal/hr (10 l/hr)		HAD-8 N/A		HAD-15 2.11 gal/hr (8 l/hr)			
			HAD-8 1.32 gal/hr (5 l/hr)		HAD-15 2.64 gal/hr (10 l/hr)		HAD-8 1.32 gal/hr (5 l/hr)		HAD-15 2.64 gal/hr (10 l/hr)		HAD-8 N/A		HAD-15 2.11 gal/hr (8 l/hr)			
Horizontal Run 30'/10m			HAD-8 2.11 gal/hr (8 l/hr)		HAD-15 3.69 gal/hr (14 l/hr)		HAD-8 3.2 gal/hr (12 l/hr)		HAD-15 2.11 gal/hr (8 l/hr)		HAD-8 N/A		HAD-15 1.32 gal/hr (5 l/hr)			
			HAD-8 1.32 gal/hr (5 l/hr)		HAD-15 2.64 gal/hr (10 l/hr)		HAD-8 1.32 gal/hr (5 l/hr)		HAD-15 2.64 gal/hr (10 l/hr)		HAD-8 N/A		HAD-15 2.11 gal/hr (8 l/hr)			
			HAD-8 1.32 gal/hr (5 l/hr)		HAD-15 2.64 gal/hr (10 l/hr)		HAD-8 1.32 gal/hr (5 l/hr)		HAD-15 2.64 gal/hr (10 l/hr)		HAD-8 N/A		HAD-15 2.11 gal/hr (8 l/hr)			
Horizontal Run 45'/15m			HAD-8 2.11 gal/hr (8 l/hr)		HAD-15 3.69 gal/hr (14 l/hr)		HAD-8 3.2 gal/hr (12 l/hr)		HAD-15 2.11 gal/hr (8 l/hr)		HAD-8 N/A		HAD-15 1.32 gal/hr (5 l/hr)			
			HAD-8 1.32 gal/hr (5 l/hr)		HAD-15 2.64 gal/hr (10 l/hr)		HAD-8 1.32 gal/hr (5 l/hr)		HAD-15 2.64 gal/hr (10 l/hr)		HAD-8 N/A		HAD-15 2.11 gal/hr (8 l/hr)			
			HAD-8 1.32 gal/hr (5 l/hr)		HAD-15 2.64 gal/hr (10 l/hr)		HAD-8 1.32 gal/hr (5 l/hr)		HAD-15 2.64 gal/hr (10 l/hr)		HAD-8 N/A		HAD-15 2.11 gal/hr (8 l/hr)			

Light Commercial Grade Condensate Pumps

PABX Series

The PABX is Hartell's light commercial condensate pump, rounding out our condensate line. It is the ideal pump for applications requiring higher lift and greater capacity than traditional residential condensate pumps. The PABX has an integral full-flow check valve and a high torque motor. A safety auxiliary switch and three inlets, including an alternate inlet at the base, come standard in this model.



Key Features:

- ▶ Max temperature: 110°F (43°C)
- ▶ Four-quart heavy duty ABS plastic reservoir
- ▶ Auxiliary safety switch
- ▶ Three inlets: 1.12 in. (28 mm) and 1.37 in. (35 mm) top inlets
- ▶ Input voltage: 115V, 230V
- ▶ 0.75 in. (19 mm) FNPT alternate inlet at base
- ▶ Suitable for gas condensing furnace applications
- ▶ Max lift: 22 ft. (6.7 m)
- ▶ Factory installed full-flow check valve
- ▶ 6 ft. (1.8 m) power cord and molded plug (US version only)
- ▶ 1 year warranty

Lift/Feet	2'	4'	6'	8'	10'	12'	14'	16'	18'	20'	22'	24'	26'	36'	48'	
Lift/Meters	0.60	1.21	1.82	2.43	3.04	3.65	4.26	4.87	5.48	6.09	6.70	7.31	7.92	10.97	14.63	
Model PABX	○ 155 gal/hr (586 l/hr)		○ 135 gal/hr (511 l/hr)				○ 90 gal/hr (340 l/hr)						○ 68 gal/hr (75 l/hr)			

Commercial Grade Condensate Pumps

Hartell's pumps are redefining the commercial condensate pump market



Application of Commercial Grade Condensate Pumps

High Temperature Condensate Applications

Hartell pumps are designed with oil and chemical resistant high temperature rated materials with robust design elements to provide a new standard of quality and long service life. Our commercial condensate pumps range up to 212°F (100°C). We provide three levels of motor bearing protection from steam and water splash to ensure maximum motor life.

High Capacity Condensate Applications

Hartell pumps include large volume reservoirs for applications involving high surges of water. Our pumps are particularly suited for commercial ice machines and the high volumes of water produced during the cleaning flush cycles as well as commercial and industrial air conditioning systems, large refrigeration units, and multiple unit installations to tie several drains into one disposal pump.



Plenum Air-Handling Applications

Hartell PlenumPlus™ pumps are UL 2043 tested and meet all applicable NFPA codes. In the event of a fire, they won't give off excessive heat or smoke, making PlenumPlus pumps the safest pumps in the industry in air-handling spaces.

Plenum Rated Condensate Pumps

A3/A5 Series

Hartell's A3/A5 series makes handling condensate easy with an exceptionally robust design, high pumping capacity, and large high temperature polypropylene reservoir. This series is particularly suited for condensate return in a plenum air-handling space, which means in the event of a fire, it won't give off excessive heat or smoke.



Key Features:

- ▶ Plenum rated
- ▶ UL 2043 tested
- ▶ Max temperature: 212°F (100°C)
- ▶ Fully automatic operation
- ▶ Available voltages:
 - » A3: 115V, 208/230V, 277V
 - » A5: 115V, 208/230V, 380/460V
- ▶ Discharge connections
 - » A3X: 115V 3/8 in. OD copper compression connection
 - » A3X: 230V, A3X-277, all A5X 1/2 in. OD copper compression connections
- ▶ 3 lead wires and conduit conversion standard
- ▶ Heavy duty construction for commercial applications
- ▶ Reversible reservoir allows installation flexibility
- ▶ Built in check valve, easily disassembles for cleaning
- ▶ Quick disconnect discharge feature for easy servicing

- ▶ Motor bearings have double protection against water splash and steam vapor
- ▶ Auxiliary safety switch
- ▶ Stainless steel shaft for corrosion resistance
- ▶ Heavy duty threaded impeller attachment
- ▶ Inlet and discharge rotate to reduce strain on tubing and piping
- ▶ Standard low level inlet 3/4 in. barbed tubing connection (requires site modification)
- ▶ 1 year warranty

*Hartell's Model A3 and A5 have been tested to, and yielded results that fell within the acceptance criteria of UL standard 2043, Fourth Edition, "Fire Test for Heat and Visible Smoke Release for Discrete Products and Their Accessories Installed in Air-Handling Spaces."

Lift/Feet	2'	4'	6'	8'	10'	12'	14'	16'	18'	20'	22'	24'	26'	36'	48'
Lift/Meters	0.60	1.21	1.82	2.43	3.04	3.65	4.26	4.87	5.48	6.09	6.70	7.31	7.92	10.97	14.63
Model A3			351 gal/hr (1329 l/hr)			309 gal/hr (1170 l/hr)			245 gal/hr (927 l/hr)			180 gal/hr (681 l/hr)			
Model A5			550 gal/hr (2082 l/hr)			528 gal/hr (1999 l/hr)			495 gal/hr (1874 l/hr)			462 gal/hr (1749 l/hr)		390 gal/hr (1476 l/hr)	306 gal/hr (1158 l/hr)

KL-1DG Series

High Temperature, Low Profile Commercial Grade Condensate Pump

When a low profile pump is required, Hartell's KL-1DG is the pump of choice. The KL-1DG series has a high impact, corrosion resistant, high temperature polypropylene, slim line reservoir with built in check valve. This model can handle temperatures up to 212°F and is also suited for condensate return in a plenum air-handling space, which means in the event of a fire, it won't give off excessive heat or smoke.

Key Features:

- ▶ Plenum rated
- ▶ UL 2043 tested
- ▶ Max temperature: 212°F (100°C)
- ▶ 1-quart reservoir, low profile height of 1-3/4 in.
- ▶ Two inlet sizes: 1 in. and 1-3/4 in.
- ▶ Available voltages: 115V, 230V, 277V
- ▶ Auxiliary safety switch
- ▶ Max lift: 18 ft. (5.4m)
- ▶ Built in check valve
- ▶ 1 year warranty



*Hartell's Model KL-1DG has been tested to, and yielded results that fell within the acceptance criteria of UL standard 2043, Fourth Edition, "Fire Test for Heat and Visible Smoke Release for Discrete Products and Their Accessories Installed in Air-Handling Spaces."

Lift/Feet	2'	4'	6'	8'	10'	12'	14'	16'	18'	20'	22'	24'	26'	36'	48'	
Lift/Meters	0.60	1.21	1.82	2.43	3.04	3.65	4.26	4.87	5.48	6.09	6.70	7.31	7.92	10.97	14.63	
Model KL-1DG			○ 55 gal/hr (208 l/hr)													
					○ 38 gal/hr (144 l/hr)											
							○ 6 gal/hr (23 l/hr)									

A2 Series Pumps

Hartell's A2 series commercial grade condensate pumps define a new standard of quality and performance. These pumps offer unmatched service life by using oil- and chemical-resistant, high-temperature rated materials with robust design elements. Additionally, these pumps offer motor protection from splash, helping ensure maximum life. Designed for optimal performance where cast aluminum construction is required.

Key Features:

- ▶ Solid cast aluminum reservoir
- ▶ Multiple piping arrangements
- ▶ Maintenance-free ball bearing motor design
- ▶ Eliminates need for lubrication
- ▶ Max temperature: 150°F (65°C)
- ▶ Available auxiliary switch on "X" models
- ▶ Voltages available: 115V, 230V
- ▶ 1 gallon, heavy-duty, cast aluminum reservoir
- ▶ Unitized construction
- ▶ Usable lifts up to 20 ft. (6m)
- ▶ Commercial application
- ▶ Snap-action switch
- ▶ 6 ft. cord and plug
- ▶ Stainless steel shaft
- ▶ Thermally protected motor
- ▶ Constructed of the highest quality workmanship and materials
- ▶ Inlet size options: two 1-1/4 in. or one 1-3/8 in.
- ▶ 3/8 in. outlet
- ▶ Expert design to maximize condensation collection and removal
- ▶ 1 year warranty



Lift/Feet	2'	4'	6'	8'	10'	12'	14'	16'	18'	20'	22'	24'	26'	36'	48'		
Lift/Meters	0.60	1.21	1.82	2.43	3.04	3.65	4.26	4.87	5.48	6.09	6.70	7.31	7.92	10.97	14.63		
Model A2X- 1965DV	○ 390 gal/hr (1476 l/hr)																
				○ 300 gal/hr (1135 l/hr)													
						○ 240 gal/hr (908 l/hr)											
										○ 60 gal/hr (227 l/hr)							

A2-SA Series Pumps

Hartell's Model A2-SA commercial grade condensate pump series defines a new standard of quality and performance. These pumps offer unmatched service life by using oil- and chemical-resistant, high-temperature rated materials with robust design elements. Additionally, these pumps offer motor protection from steam and water splash, helping to ensure maximum motor life. The A2-SA commercial grade condensate pump is designed for heavy duty removal of high temperature condensate.

Key Features:

- ▶ Max temperature: 212°F (100°C)
- ▶ Stainless steel float
- ▶ Solid cast aluminum reservoir
- ▶ Multiple piping arrangements
- ▶ Maintenance-free ball bearing design eliminates need for lubrication
- ▶ Auxiliary safety switch on A2-SA-X115 & A2-SA-X230
- ▶ Voltages available: 115V, 230V
- ▶ Full load amps of 2 or 3.5
- ▶ 1 gallon, heavy-duty, cast aluminum reservoir
- ▶ Unitized construction
- ▶ Usable lifts up to 20 ft. (6m)
- ▶ Commercial application
- ▶ Snap-action switch
- ▶ 6 ft. cord and plug
- ▶ Stainless steel float
- ▶ Thermally protected motor
- ▶ Constructed of the highest quality workmanship and materials
- ▶ Inlet size options: two 1/4 in.
- ▶ 3/8 in. outlet
- ▶ Expert design to maximize condensation collection and removal
- ▶ 1 year warranty



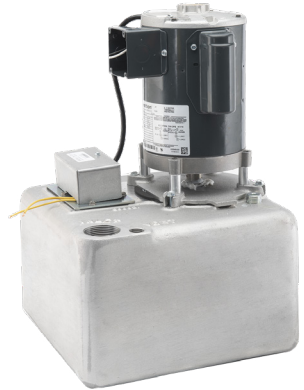
Lift/Feet	2'	4'	6'	8'	10'	12'	14'	16'	18'	20'	22'	24'	26'	36'	48'
Lift/Meters	0.60	1.21	1.82	2.43	3.04	3.65	4.26	4.87	5.48	6.09	6.70	7.31	7.92	10.97	14.63
Model A2SA			○ 185 gal/hr (700 l/hr)						○ 139 gal/hr (526 l/hr)						
										○ 79 gal/hr (299 l/hr)					

SC-1A Series Pumps

Designed expressly for automatically returning condensate to a collection point where radiation has been added to existing systems below the returns.

Key Features:

- ▶ Max temperature: 212°F (100°C)
- ▶ Rated for 2,000 EDR; 480,000 BTU
- ▶ Vapor sealed, 4 gallon cast aluminum reservoir
- ▶ 1/2 hp, 3,400 rpm motor
- ▶ Inlet: 1-1/2 in. FNPT; outlet: 3/4 in. FNPT
- ▶ Auxiliary safety switch on model SC-1AX-115/230
- ▶ Integral junction box
- ▶ Steam rated for 2,000 EDR, 480,000 BTU
- ▶ Usable lifts over 40 ft. (12m)
- ▶ Dual voltage motor, 115V/230V
- ▶ Heavy duty design for industrial applications
- ▶ 1 year warranty

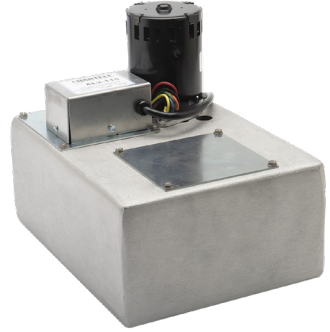


Lift/Feet	2'	4'	6'	8'	10'	12'	14'	16'	18'	20'	22'	24'	26'	36'	48'	
Lift/Meters	0.60	1.21	1.82	2.43	3.04	3.65	4.26	4.87	5.48	6.09	6.70	7.31	7.92	10.97	14.63	
Model SC1A/ SC1AX			4200 gal/hr (15898 l/hr)				3780 gal/hr (14308 l/hr)						2820 gal/hr (10674 l/hr)			
													1800 gal/hr (6813 l/hr)			

Commercial Condensate Pumps

AL2 Series Pumps

For applications involving high surges of water. Particularly suited for commercial ice machines and high volumes of water produced during the cleaning flush cycles. The AL2 comes with a 2 gallon cast aluminum reservoir, 6 ft. cord and plug, 1-3/8 in. inlet and 3/8 in. NPT female outlet. Maximum water temperature 150°F (65°C).



Key Features:

- ▶ Max temperature: 150°F (65°C)
- ▶ Voltages available: 115V, 230V
- ▶ Snap action switch
- ▶ 2 gallon cast aluminum reservoir
- ▶ Integral junction box
- ▶ 6 ft. cord and plug
- ▶ 3/8 in. inlet and 3/8 in. NPT female outlet
- ▶ Stainless steel shaft
- ▶ Thermally protected motor
- ▶ 1 year warranty

Lift/Feet	2'	4'	6'	8'	10'	12'	14'	16'	18'	20'	22'	24'	26'	36'	48'	
Lift/Meters	0.60	1.21	1.82	2.43	3.04	3.65	4.26	4.87	5.48	6.09	6.70	7.31	7.92	10.97	14.63	
Model AL2			○ 185 gal/hr (700 l/hr)				○ 139 gal/hr (526 l/hr)				○ 79 gal/hr (299 l/hr)				○ 51 gal/hr (193 l/hr)	

Plumbing Pumps

Unitized design and rugged construction for various plumbing applications



Waste Water Drain, Laundry Pumps

Hartell waste water drain and laundry pumps are designed for laundry and wet bar applications where the sink or appliance is installed below the plumbing drain. Our direct mount LTA pumps provide a time saving solution for wet bars and laundry trays while our LTP/LTS reservoir type drain pumps are ideal for laundry trays, utility sinks, and wet bars. Both styles of pumps are best suited for when gravity drainage is not practical and no main stack venting is required.

Currently only available in the US.



LTP/LTS Reservoir Series Pumps

LTS medium temp, high capacity reservoir pump

Heavy duty pump designed for moving large quantities of water. Used in commercial applications such as laundry, air conditioning, or refrigeration systems, and multiple unit installations to tie several drains into one disposal pump.

LTP medium capacity reservoir pump

Designed for laundry and wet bar applications. Primarily used where the sink or appliance is installed below the plumbing drain.



Key Features:

- ▶ Max temperature: 130°F (60°C)
- ▶ Voltage: 115V
- ▶ LTP: 12 ft (3.6m) shut off
- ▶ LTS: 16.5 ft (5m) shut off
- ▶ Suds proof reservoir
- ▶ Unitized construction
- ▶ Structural foam polypropylene
- ▶ Fits under utility sink reservoir
- ▶ No main stack vent connection
- ▶ Simple installation saves time required*
- ▶ 8 ft. cord and plug
- ▶ Sealed switch assembly
- ▶ Fits inside 24 in. base cabinets
- ▶ Allows sink installation without breaking concrete
- ▶ 1 year warranty

* NSPC section 11.7.11, check local codes

Lift/Feet	2'	4'	6'	8'	10'	12'	14'	16'	18'	20'	22'	24'	26'	36'	48'	
Lift/Meters	0.60	1.21	1.82	2.43	3.04	3.65	4.26	4.87	5.48	6.09	6.70	7.31	7.92	10.97	14.63	
Model LTP			● 1560 gal/hr (5905 l/hr)													
					● 600 gal/hr (2271 l/hr)											
Model LTS			● 2628 gal/hr (9948 l/hr)													
					● 2100 gal/hr (7950 l/hr)											

LTA Series Pumps

Completely self-contained units that are easy to connect directly to laundry tray tubs. Lightweight and compact, these models eliminate reservoirs, traps, extra fittings and costly labor. The LTA-1 includes a pressure-activated switch that turns the pump on when water enters the tub.

Key Features:

- ▶ Max temperature: 140°F (60°C)
- ▶ UL approved
- ▶ Voltage: 115V
- ▶ Direct mount pump
- ▶ Pressure switch
- ▶ Mounts directly to sink tailpiece
- ▶ No traps required
- ▶ Fits inside 24 in. base cabinets
- ▶ Takes up zero floor space
- ▶ 8 ft. cord and plug
- ▶ Lightweight and compact, these models eliminate reservoirs, traps, extra fittings, and costly labor
- ▶ Includes a pressure activated switch that turns on the pump when water enters the tub
- ▶ ABS high impact, corrosion resistant, plastic construction
- ▶ Fits under wet bars, utility sinks, kitchenettes and vanities
- ▶ Simple installation
- ▶ No main stack vent connection required
- ▶ Allows sink installation without breaking concrete
- ▶ 1 year warranty



* NSPC section 11.7.11, check local codes

Currently only available in the US.

Lift/Feet	2'	4'	6'	8'	10'	12'	14'	16'	18'	20'	22'	24'	26'	36'	48'
Lift/Meters	0.60	1.21	1.82	2.43	3.04	3.65	4.26	4.87	5.48	6.09	6.70	7.31	7.92	10.97	14.63
Model															
LTA															

Retail Refrigeration Pumps

Hartell condensate pumps are used in refrigeration applications for the automatic defrost cycle.



Retail Refrigeration Pumps

Hartell's AI series of dairy cabinet condensate removal pumps are designed using the latest reliable positive displacement pumping technology combined with Hartell's unique **Artificial Intelligence (AI) technology** to ensure long and trouble-free operation.

The AI technology built into every Hartell Retail Refrigeration Pump is capable of learning and recording its environment, allowing all aspects of the pump operation and installation to be constantly monitored. Any changes in operation that could cause a premature failure in the system or pump can be highlighted in advance by the audio-visual alarm and BMS interface before a complete failure of the system.

HDP-AI-X

The non-intrusive audible alarm highlights any alarm status, without causing major disruption, while the multi-function visual indicator provides instant diagnostics for the maintenance engineer with a quick and easy diagnostic of the status of the system. Potential alerts include:

- ▶ Pumping head too high for capacity of the pump
- ▶ Pump motor mechanical failure
- ▶ Discharge hose restriction or failure
- ▶ Pump inlet restriction
- ▶ Maintenance monitoring system
- ▶ System installation/environment changes
- ▶ Discharge Line Partially Restriction Fault
- ▶ Discharge Line Fully Restricted Fault
- ▶ Discharge Line Open Fault
- ▶ Installation Fault
- ▶ Pump unable to handle discharge length/ condensate production
- ▶ Pump Motor Failing or Faulty
- ▶ System Requires Maintenance

No specialist commissioning or training for installation is required as Hartell's AI technology is self-calibrating and the maintenance monitor ensures the pumps are regularly maintained.



Key Features:

- ▶ Two available models:
 - » Vertical Model: HDP-AI-V1 (tank size of 2 gal/7.8 l)
 - » Low Profile Model: HDP-AI-H1 (low profile of 2.44 in. height/62 mm, tank size of 1 gal/4 l)
- ▶ 115 ft. (35m) pumping head
- ▶ 21 gal/hr (80 l/hr) flow rate
- ▶ BMS interface via volt-free N/C-N/O contacts
- ▶ Built-in non-intrusive audible alarm
- ▶ Self-calibrating pump monitoring system using Hartell's AI
- ▶ Optional multifunction remote visual indicator
- ▶ Input Voltage: 115V or 230V 50/60hz +/- 10%
- ▶ Inlet Connection: 2 in. (50mm) ID
- ▶ Outlet Connection: 1/2 in. (14mm) OD

Lift/Feet	0'	32.8'	65.6'	98.4'	115'
Lift/Meters	0	10	20	30	35
Horizontal Run 3'/1m	21.1 gal/hr (80 l/hr)	9.5 gal/hr (36 l/hr)	6.0 gal/hr (23 l/hr)	4.2 gal/hr (16 l/hr)	
Horizontal Run 32.8'/10m	17.9 gal/hr (68 l/hr)	7.9 gal/hr (30 l/hr)	5.16 gal/hr (19.5 l/hr)	3.59 gal/hr (13.6 l/hr)	
Horizontal Run 65.6'/20m	15.2 gal/hr (57.8 l/hr)	6.7 gal/hr (25.5 l/hr)	4.38 gal/hr (16.6 l/hr)	3.0 gal/hr (11.5 l/hr)	
Horizontal Run 98.4'/30m	13 gal/hr (49.1 l/hr)	5.7 gal/hr (21.7 l/hr)	3.72 gal/hr (14.1 l/hr)	2.6 gal/hr (9.8 l/hr)	

Ice Machine Pumps

Hartell partners with ice machine OEMs to produce distinct styles of ice machine pumps to suit your needs.



Ice Machine Pumps

Hartell manufactures four distinct styles of ice machine pumps. With the largest variety of ice machine pumps in the industry, each style is available with a wide variety of discharge, impeller and motor options for optimal flow/ice cube production.

Hartell also partners with commercial ice machine OEMs, working closely to produce distinct styles of ice machine pumps per OEM needs. Our high-quality replacement ice machine pumps conform to NSF compliance standards, assuring clean, safe, simple and sanitary replacement, and meet or exceed the specifications of the original equipment manufacturer.

Key Features:

- ▶ Dual ball bearing, thermally protected motors with stainless steel shaft
- ▶ OEM style bracket, cord and plug
- ▶ Models to fit the most popular brands of ice making equipment:
 - » Scotsman
 - » Manitowoc
 - » Ice-O-Matic
 - » Cornelius/Ross Temp
 - » Crystal Tips/McQuay
 - » Whirlpool/Frigidaire
 - » York



Contact & Support

hartell.com

.....

United States | 215.322.0730

info@hartell.com

Headquarters

201 Ivyland Road, Ivyland, PA 18974

Factory

100 E Graham Pl. Burbank, CA 91502

Europe | +44 (0) 191 549 1212

info.europe@hartell.com

European Office

North Hylton Road, Sunderland SR5 3JD



hartell.com